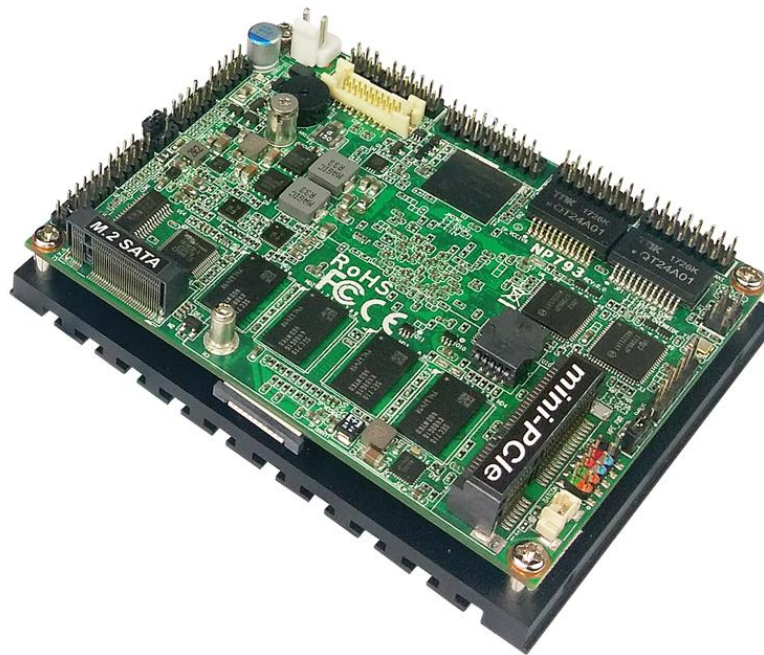


Single Board Computer NC-878 – 2.5” SBC

Datasheet v1.1



NC-878 is a 2.5” single-board computer based on Intel® Braswell N3160 SoC processor ideal for IOT, machine control and Intelligent Home applications.

Designed for reliability and with 24/7 operation in mind, the NC-878 is a Quad Core 2.5” SBC features 2GB on board DDR3L memory and 32GB on board eMMC. With its dual Intel Gigabit Ethernet LAN ports, customers can connect intranet and internet.

In addition, it offers flexible expansion with M.2 and mPCIe slot which can expand extra storage or connect other add-on modules. Other features include two USB 3.0, two USB 2.0, one RS232 and one RS232/422/485 ports, as well as HDMI/eDP dual display support with resolution up to 4K which can be used for standard main board or panel PC.

Key Features:

- Intel® Braswell N3160 SoC Processor 2.5" SBC
- Support DDR3L, on board 2GB memory
- Dual display: HDMI, eDP
- Supports 4K resolution
- Multiple expansion: 1 Mini-PCIe, 1 M.2 M key
- Rich I / O: 2 Intel GbE, 2 COM, 2 USB 3.0, 2 USB 2.0
- Certifications: CE, FCC, RoHS

NC-878 – 2.5” SBC

CPU Core

Feature	Specification
CPU	INTEL Braswell N3160 SoC Processor Quad Core 1.6GHz Max 2.24GHz, MB L2, 6WTDP
Memory	Onboard 2GB DDR3L DRAM Onboard 32GB eMMC
BIOS	AMI Flash ROM

Graphics

Controller	Intel® HD Graphics
Display	1 x HDMI 1.4b 1 x eDP HDMI: resolution up to 3840 x 2160 @ 30Hz eDP: resolution up to 4096 x 2301 @60Hz
Dual Displays	HDMI and eDP

Ethernet

Controller	2 * Intel i211AT GbE Support Fast Ethernet LAN function of providing 10/100/1000/10000 Mbps Ethernet data transfer rate
------------	--

Expansion

Mini-PCIe	1 x full-size Mini-PCIe slot
M.2	1 x M.2 slot (M key, SATA interface, 2242)
eMMC	1 x 32GB on-board (Does not support Windows 7 OS)

I/O

USB	USB 3.0 x 2 USB 2.0 x 2
Display	1 x HDMI 1 x eDP

NC-878 – 2.5" SBC

Feature	Specification
Serial	1 x RS232 1 x RS232/422/485
mPCIe	1
eMMC	32GB on board
M.2	1 x M.2-key, SATA interface, 2242
LAN	2 x Intel® i211AT GbE
SMBUS	1 x SMBus
GPIO	8 x GPIOs

Watchdog Timer

Output	From Super I/O to drag RESETCON#
Interval	256 segments

Electrical, Mechanical and Environmental Specifications

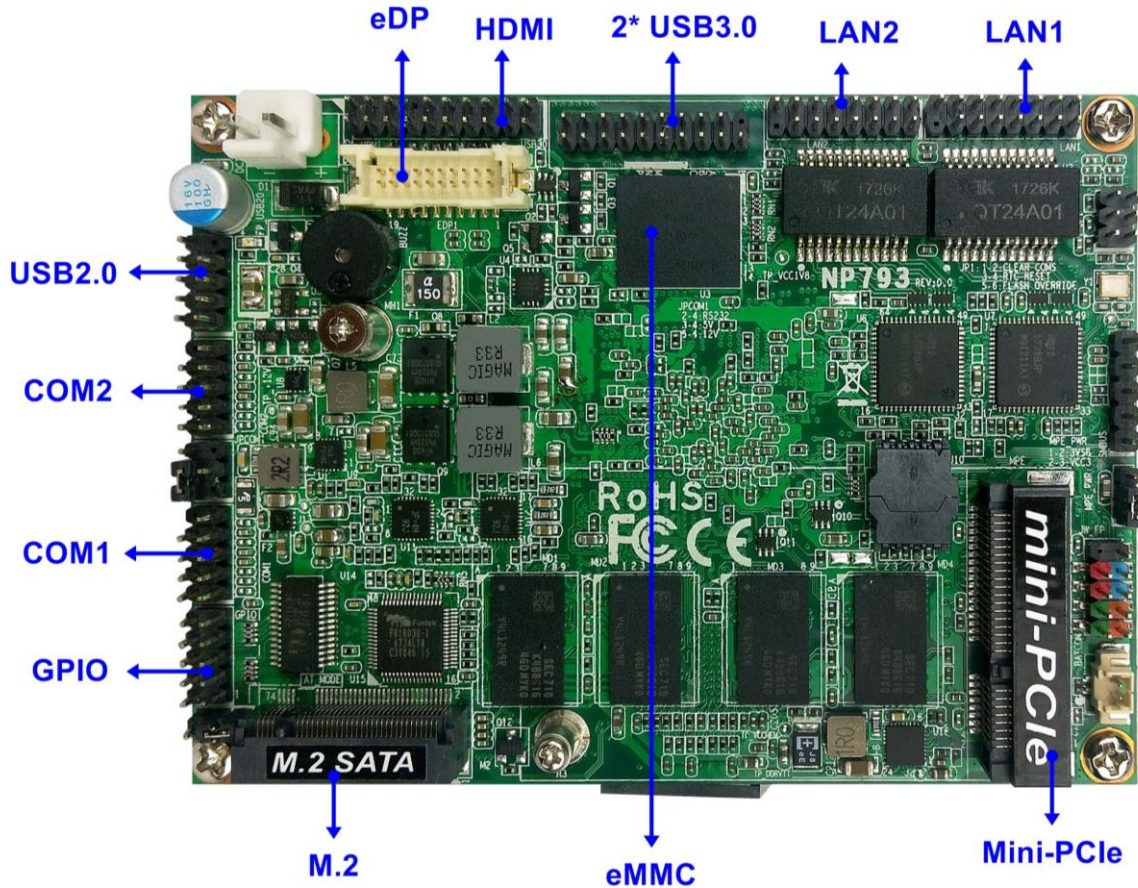
Supply Voltage	12V DC-in power
Dimensions	2.5" SBC Form Factor: 100mm (3.94") x 72mm (2.83 ")
Height	PCB: 1.6 mm Top Side: 10.9 mm
Operating temperature	0°C to 60°C
Storage temperature	-20°C to 85°C
Certifications	CE, FCC, RoHS

Software

BSP	Full Board Support Package and ready-to-run images
OS Support	Android 5.1 Linux Debian 9.0

NC-878 – 2.5" SBC

Board Layout



NC-878 – 2.5" SBC

Mechanical Drawing

